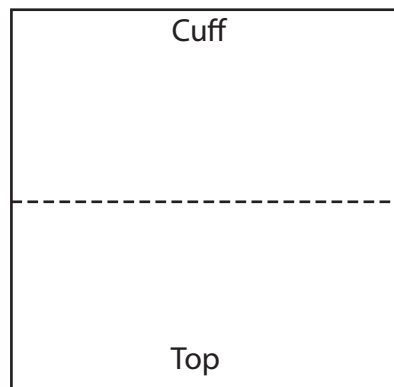
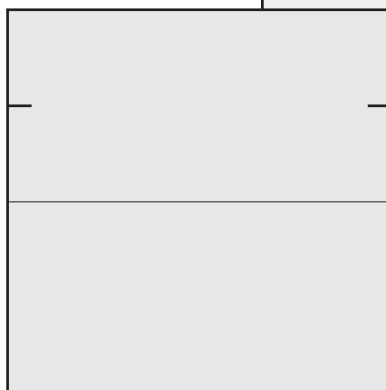


# Mittens

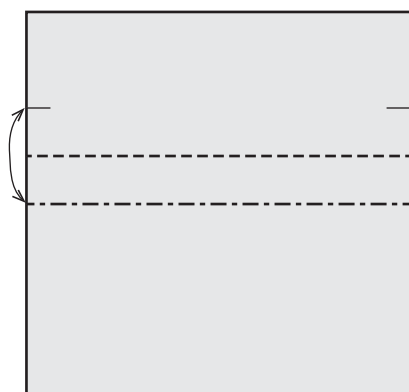
by Jane Rosemarin © 2011



1. Start the right mitten.



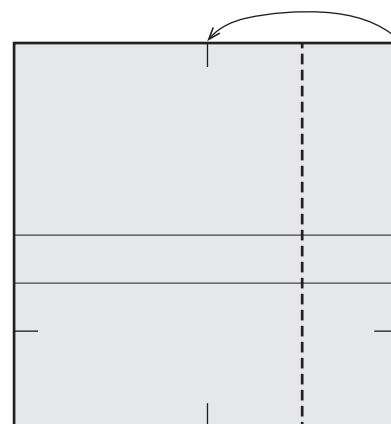
2. Make pinches at the quarter mark.



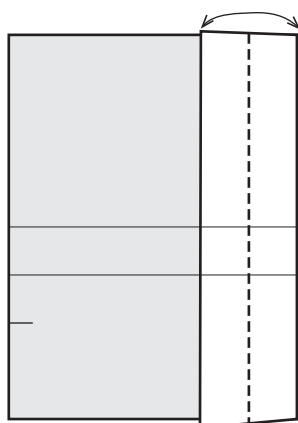
3.



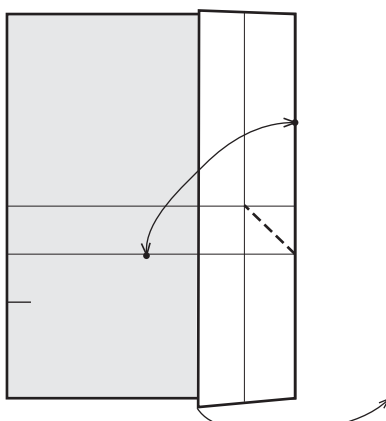
4. Pinch the vertical halfway marks.



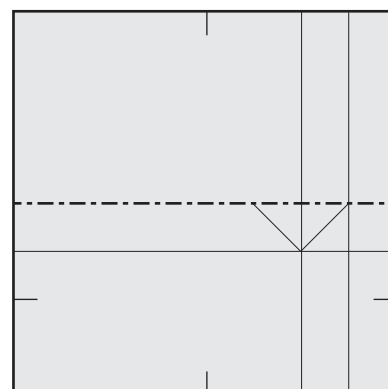
5.



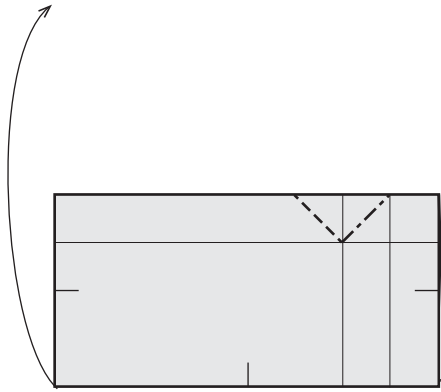
6.



7. Crease the diagonal then unfold entire flap.

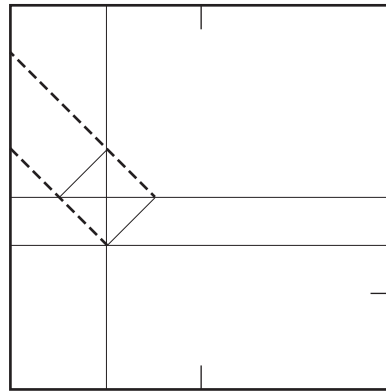


8.

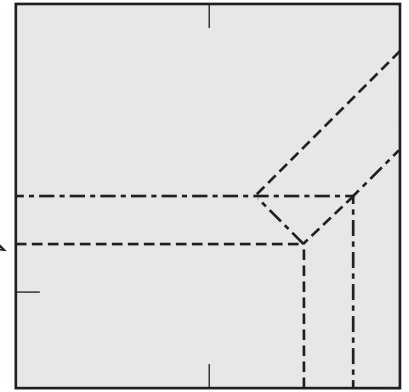


9. Crease through both layers.  
Easier to do in the air.

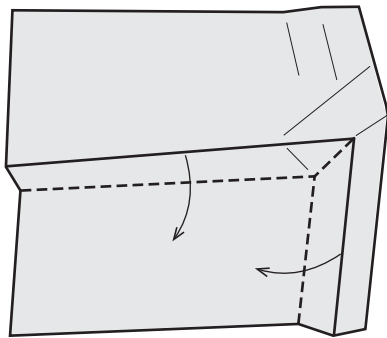
180°



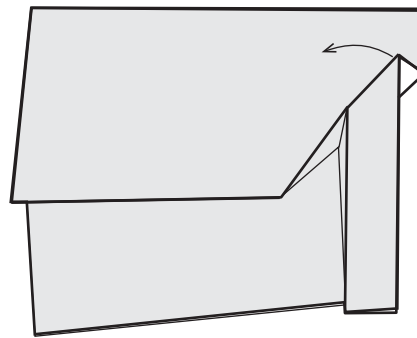
10. Extend existing creases.



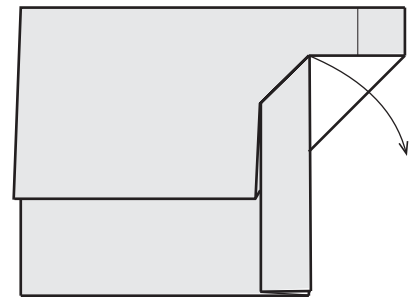
11. Next three diagrams show  
this collapse in progress.



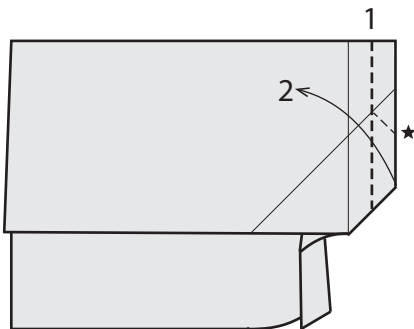
12.



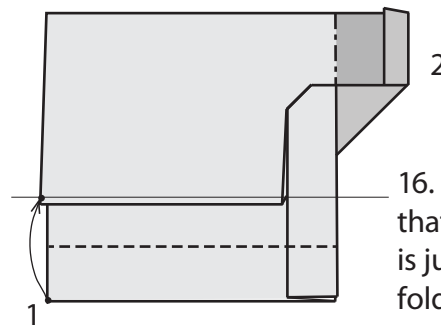
13.



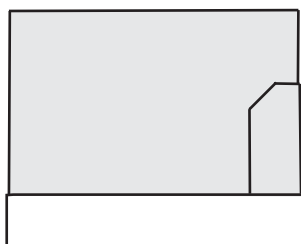
14. Open up the flap without making  
any new creases. The model will  
not lie flat. The next step will blunt  
the tip of the thumb.



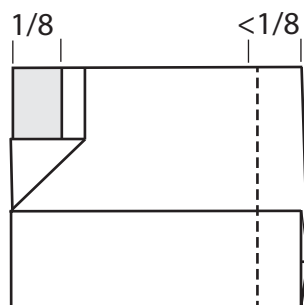
15. Make the vertical valley fold then  
return the flap to its previous  
position. ★ The small diagonal crease  
will form as you close the flap.



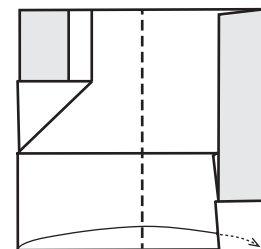
16. First fold the lower edge so  
that the horizontal folded edge  
is just covered. Then  
fold the dark area behind.



17.



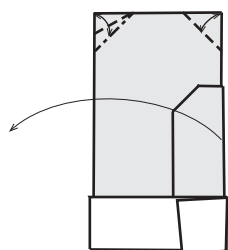
18. Fold a strip slightly less  
wide than the thumb (just  
under 1/8 of the original  
width).



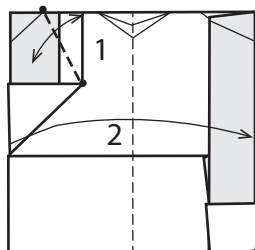
Tab

Pocket

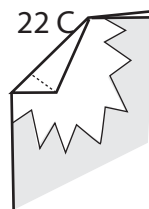
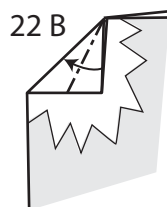
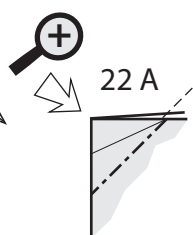
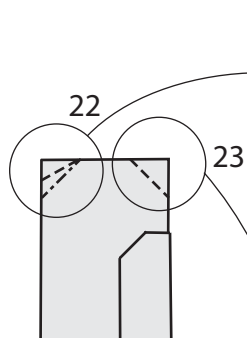
19. Insert the tab,  
align the layers and fold in half.



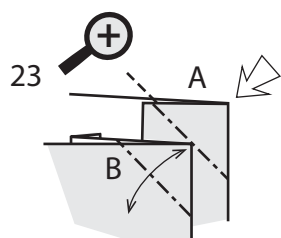
20. Shape and lock the top: Precrease mitten corners to taste. This does not have to be at a 45° angle. Bisect the left triangle with a precrease. Open to step 19.



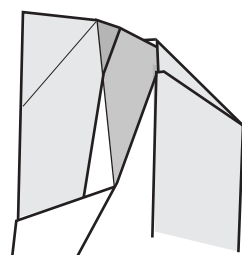
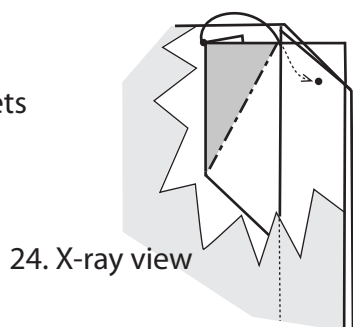
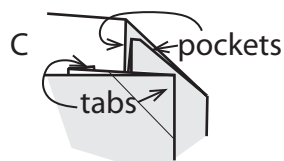
21. Valley fold and unfold the flap between the two reference points. Fold mitten in half.



22 A. Reverse fold left corner.  
22 B. X-ray view. Open model slightly, and fold both layers under to lock.  
22 C. Completed.

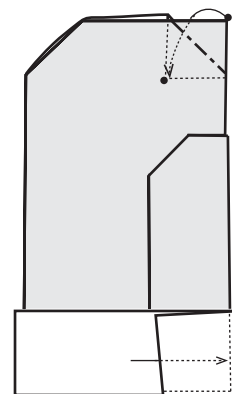


23 A. Reverse fold to make a pocket.  
23 B. Mountain fold and unfold the precrease through both layers. 23 C. Result.

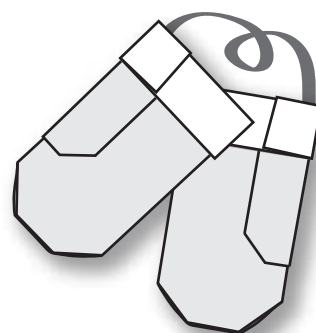
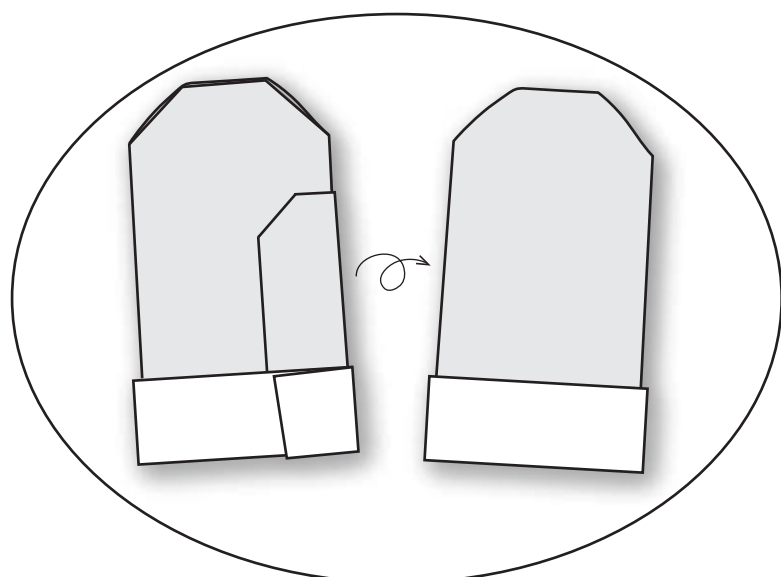


24. Inside view.

24. The right side has a two-step lock. Open the model slightly, keeping the left side locked, and tuck the triangular flap (shaded) underneath all layers of the reverse fold from step 23. Close the top flap.



25. Tuck the triangular flap into the pocket formed by the reverse fold of step 23 A. Then replace the cuff tab into its pocket.



Place a note inside. Or make a left mitten that's a mirror image, and connect them with ribbon for use as an ornament.