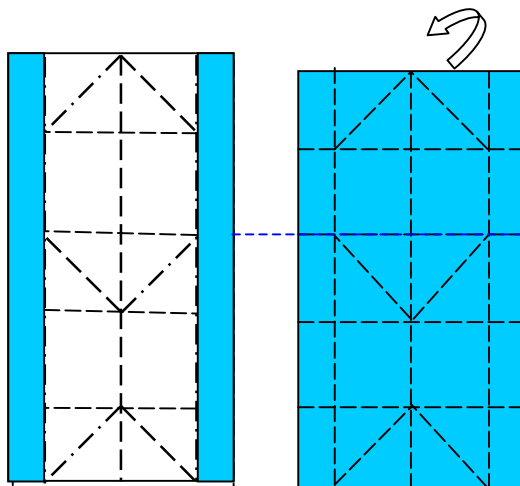
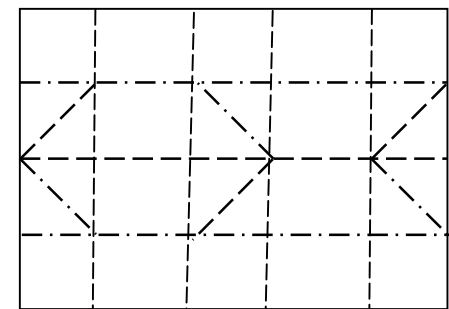
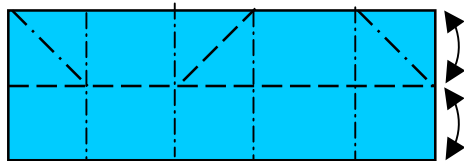
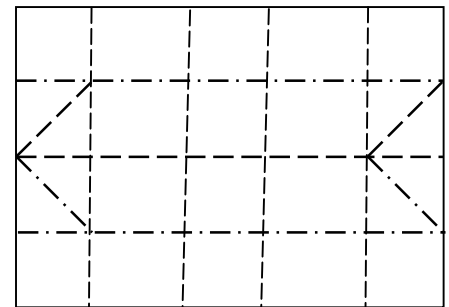
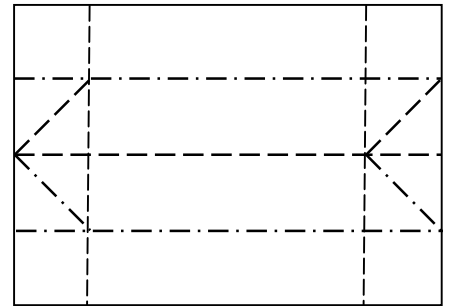
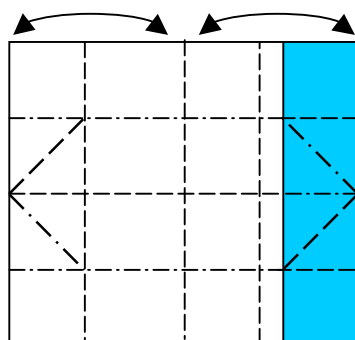
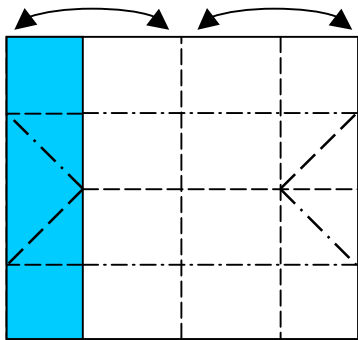
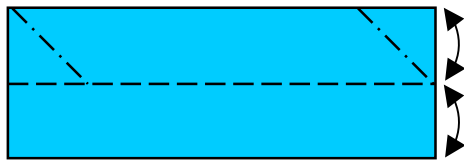


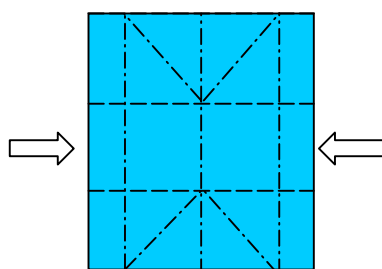
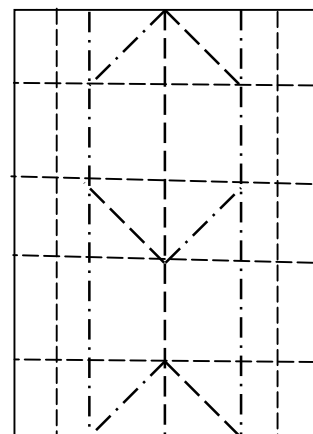
Caixa com divisória utilizando papel formato A4

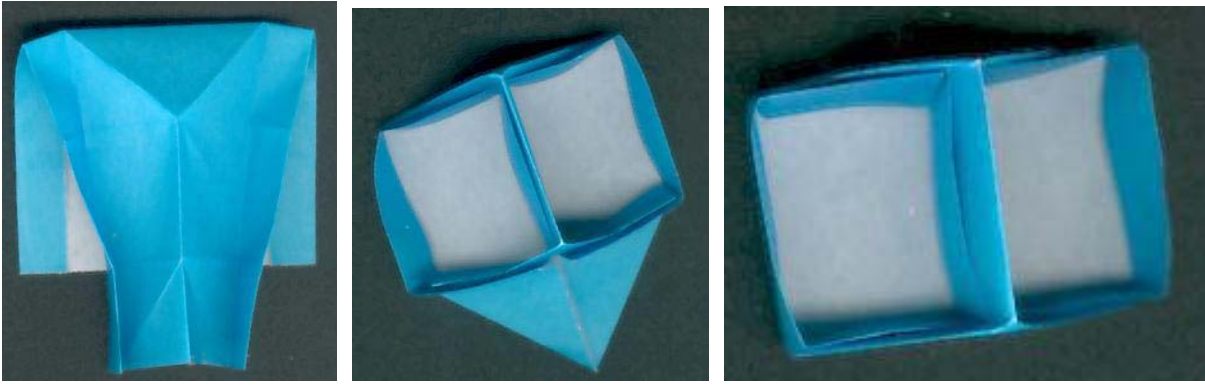
Uma adaptação do Pencil Pot/created by Marc Vigo/may 1994

Hideo Kumayama/fevereiro 2007

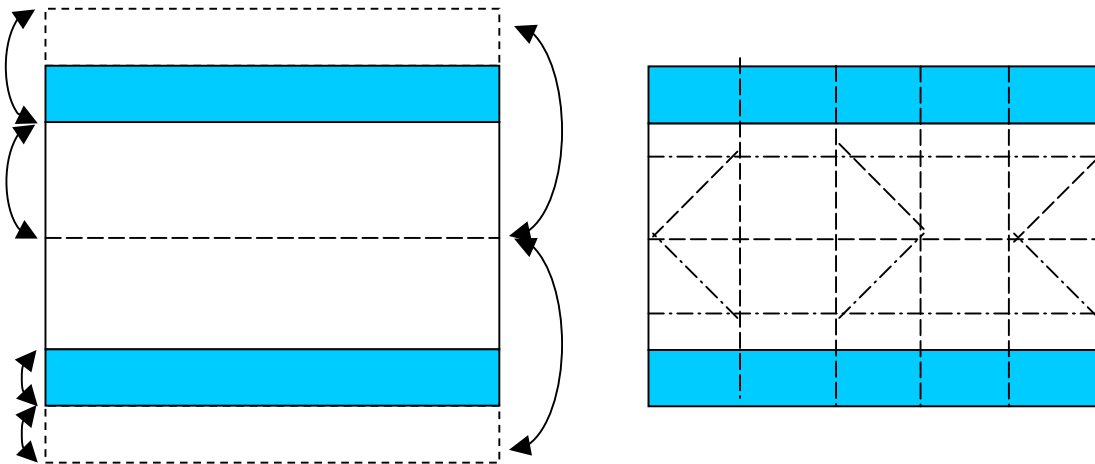


Dobrar para trás





Poderemos fazer esta/caixa retangular com divisória utilizando papel quadrado.



Para armar a caixa seguir as orientações do cesto com papel formato A4.

Na caixa com detalhes hexagonais a altura de uma parte é a metade da outra.

Na caixa rosa as duas partes são de mesma altura.



Referência;

<http://origami.kvi.nl/models/boxes/penclpot.pdf>

hkumayama1@yahoo.com.br