

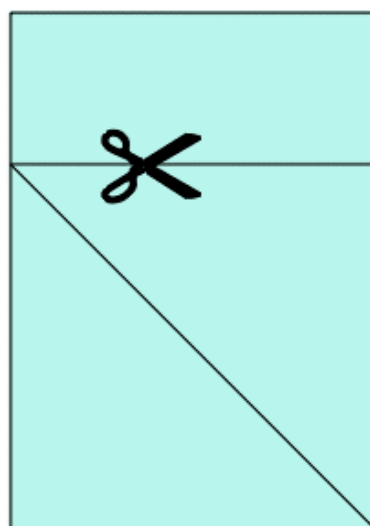
Locomotiva

di Federico Scalambra

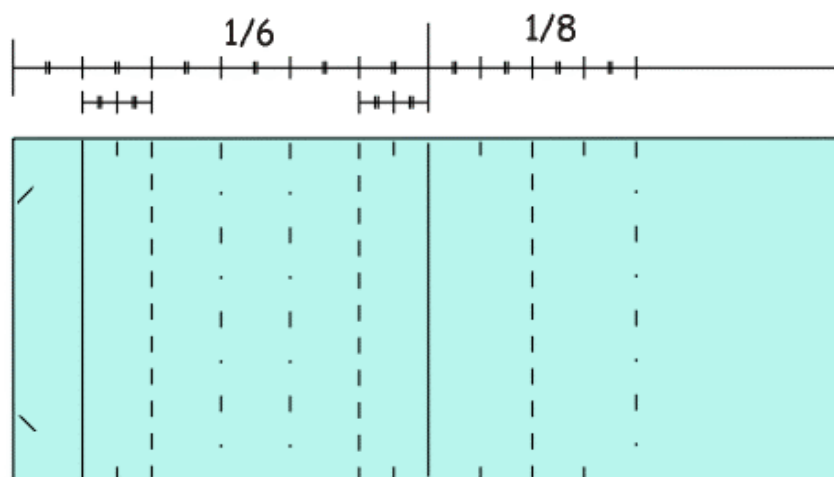
I risultati migliori si ottengono piegando un biglietto del treno...
Ma il rettangolo ottenuto tagliando un quadrato
da un formato A4 ha le stesse proporzioni!



1

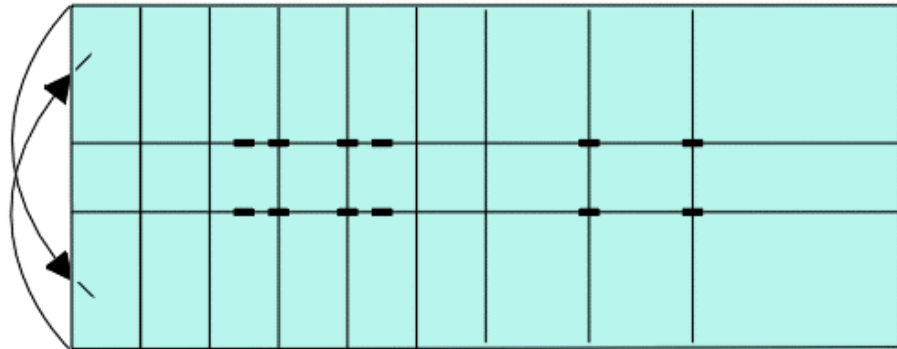


2

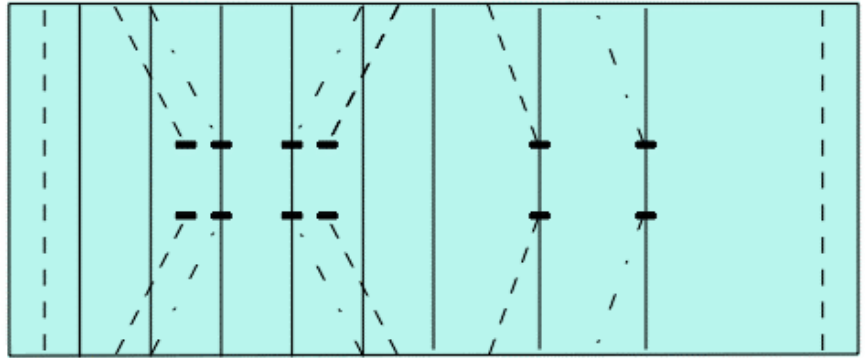


3

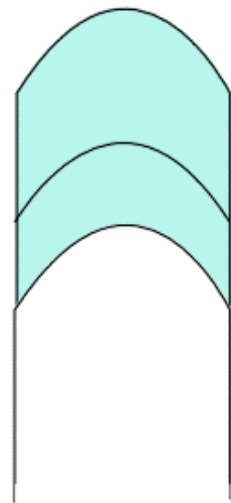
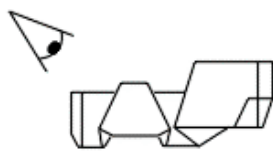
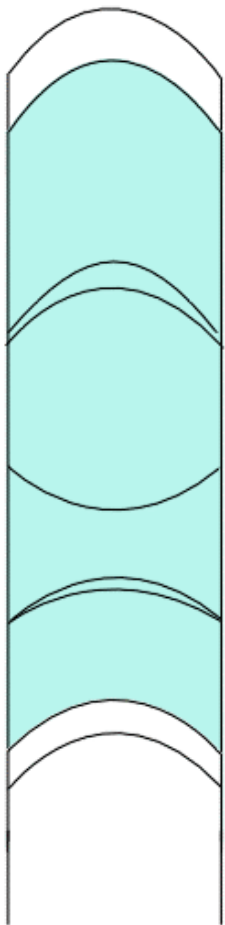
Segnare le pieghe solo dove indicato.



4

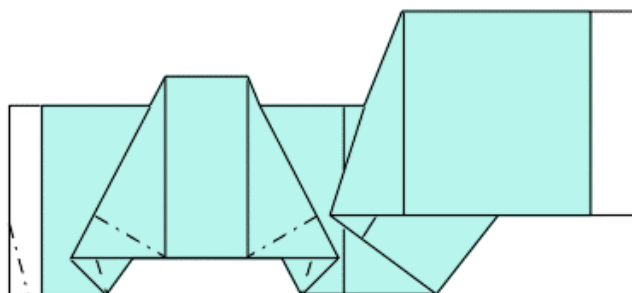


Piegare dando tridimensionalità al modello.

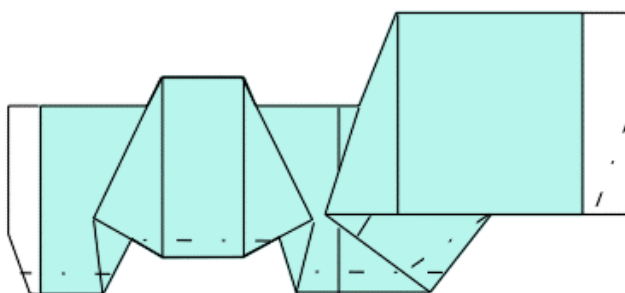


Da questo punto in poi le pieghe sono ripetute simmetricamente sull'altro lato.

5



6



7

